

百

MAISONRY

1


#### Acknowledgement

The **Masonry** book is a culmination of hard work of many people who have committed their specialist skills, knowledge and insights. The Masonry management team would like to thank our design agency, **Voice Add Pte Ltd**; our photographers and printer for their valuable contribution to this book. Last but not least, we are grateful for the continued support and expressions of confidence from our customers, business associates and suppliers. We thank all those who have had a hand in building the foundation of Masonry and those who will contribute to the success of our future endeavours.



**TRANSCENDING TIME**





AS THE AGES PASS, MAN'S DEEDS AND LIFE  
ARE CELEBRATED AND MOVE ON INTO THE MISTS  
OF LEGEND. BUT THE STONES HE USED BEAR  
TESTAMENT, TRANSCENDING TIME.

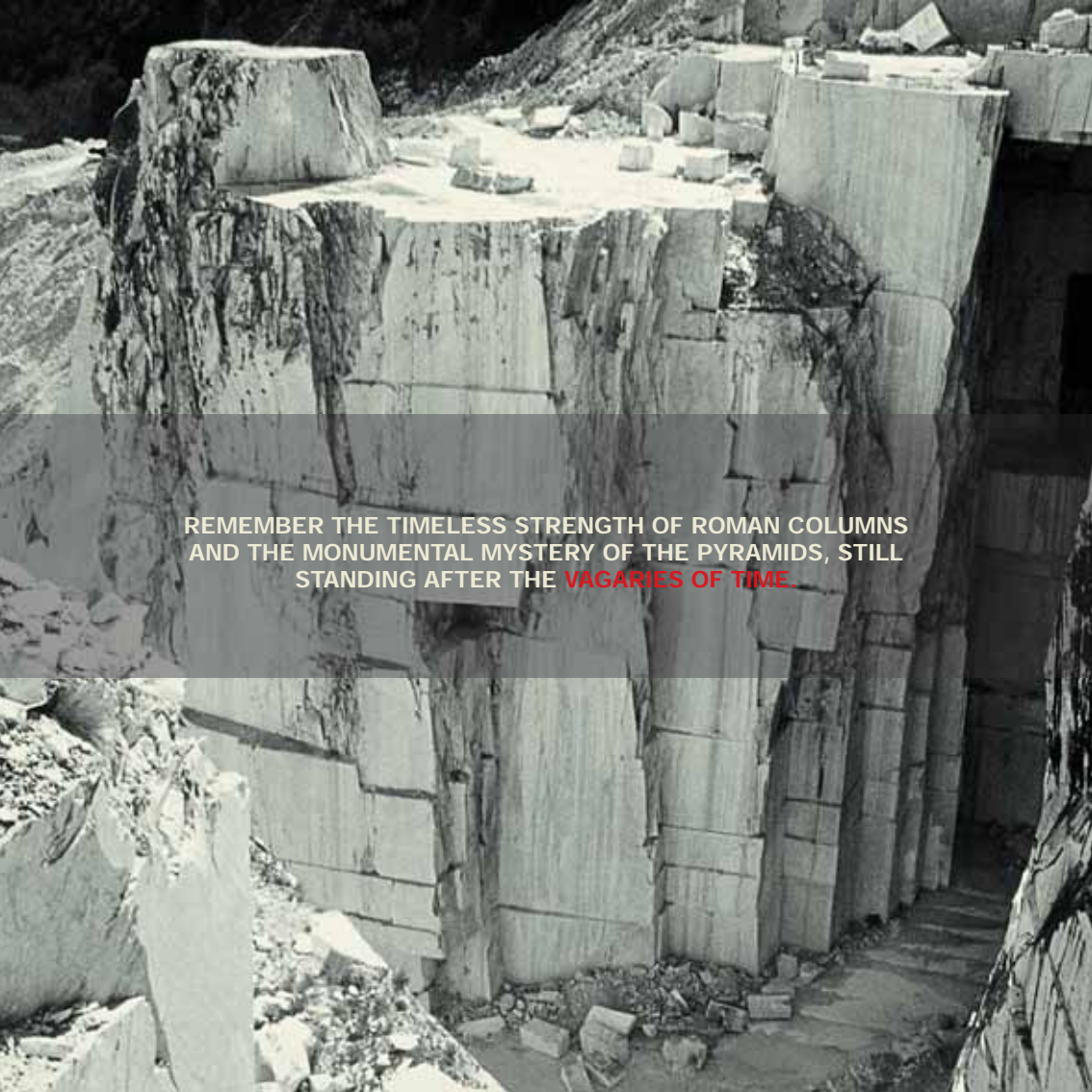


Time is too slow for those who wait; too swift for those who fear; too long for those who grieve;  
too short for those who rejoice; but for those who love, time is eternity - Henry Van Dyke



A black and white photograph of a quarry. Large, rectangular stone blocks are visible, some stacked and others being worked on. The background shows a steep, rocky hillside. A semi-transparent dark grey rectangular box is overlaid in the center of the image, containing white text. The word 'WARMTH' in the text is highlighted in red.

TOUCH THE COOL SMOOTHNESS OF MARBLE. LAY YOUR PALM  
ON THE ROUGH **WARMTH** OF SANDSTONE. AND RECALL.




REMEMBER THE TIMELESS STRENGTH OF ROMAN COLUMNS  
AND THE MONUMENTAL MYSTERY OF THE PYRAMIDS, STILL  
STANDING AFTER THE **VAGARIES OF TIME**.



**Ars longa, vita brevis est (Art is long, life is short) - Hippocrates**







**Stone** is one of Man's earliest building materials -- and its most enduring.  
It has been harnessed over the millennia for its beauty, versatility and resilience.  
The Eternal City of Rome endures because of the very material it is made of -- vast quantities  
of stone were used to build everything from the huge Colosseum to humble merchants' homes.



Stone was also cut and interlocked to build the Great Wall of China;



and carved meticulously by faceless artisans for



worship at the Angkor Wat.





Today, stone is used in all areas of buildings, lending its subtlety to the warmth



of homes; its power and gloss to towering office complexes;



and its strength to grand public spaces.







**The greatest use of life is to spend it for something that will outlast it. - William James**





Masonry offers the modern builder stones with the same lasting qualities ancient craftsmen so prized. But new ways of cutting, shaping, joining and even imprinting designs on natural stone have opened the possibilities for its use far beyond their imaginations. As a specialist in natural stone, Masonry offers products in varied textures, size and palette together with intimate knowledge of how to manage and execute stonework plans for all kinds of contemporary designs.





Bad times, hard times - this is what people keep saying; but let us live well and times shall be good.  
We are the times. Such as we are, such are the times. - St Augustine



**MASONRY** IS BUILT ON THE **SOLID FOUNDATIONS** OF ITS DIRECTORS' WIDE EXPERIENCE WITH ARCHITECTURAL STONE ALONG THE ENTIRE VALUE CHAIN, FROM DRAWING TO SUPPLY TO PROJECT MANAGEMENT TO INSTALLATION.



THEY HAVE WORKED ACROSS ASIA AND OTHER PARTS OF THE **WORLD**, AND CAN  
CALL ON CONTACTS WITH GLOBAL SUPPLIERS AND PROFESSIONALS.





True wisdom lies in gathering the precious things out of each day as it goes by. - **ES Bouton**



THEY HAVE ACCUMULATED SOME 40 YEARS OF EXPERIENCE WORKING WITH STONE SEPARATELY AND TOGETHER. THE DIRECTORS CEMENTED THEIR LONGSTANDING WORKING RELATIONSHIP IN 1997 BY FORMING MASONRY,



WHICH HAS SINCE GROWN TO INCLUDE A SUPPORTING TEAM OF IN-HOUSE DRAFTSMEN AND PROFESSIONALS. **MASONRY** HAS MADE ITS MARK BY WINNING A NUMBER OF **LARGE-SCALE** PROJECTS IN SINGAPORE.



The value of life lies not in the length of days but in the use we make of them. - Michel de Montaigne



Renzo Baldo was trained as a civil and structural engineer at the University of Pisa in his native Italy. His career is marked with notable projects around the world, including in Hong Kong where he worked on the iconic Bank of China Building designed by IM Pei. He has also worked in Kuwait, Malaysia and Indonesia. He continues to enjoy a wide network of contacts in Italy, renowned for being a source of beautiful marble and travertine.





Ronald Ho's grounding in architecture and marketing has helped him bridge both project management and business development. Before Masonry, he worked on Winsland House, Wheelock Place and Kenzo Tange's UOB Plaza I and II in Singapore. He also helped seal deals in Beijing and Singapore for his previous company where he was involved in The Treasury and Suntec City (Phase II) projects as well. His web of stone suppliers stretches from China to Israel to Spain and Portugal.



Jeffrey Liew ran his own installation business for 16 years before forming Masonry. While intimately familiar with the Singapore market, he has also gained regional exposure, working on the Bank of China Building in Hong Kong, and more recently, the Kuala Lumpur International Airport. In Singapore, Jeffrey's work can be seen at UOB Plaza I and II in the financial heart of the city.



**What we love to do, we find the time to do. - John Lancaster Spalding**



ISO  
9001

Masonry is an integrated architectural stone services company. Its range and abilities cover the entire value chain. Depending on the scope and scale of the project, Masonry may provide one or several services or integrate all its abilities. Its work is backed by an ISO 9001 certification for quality management standards, attained just three years after its inception.







# MASONRY PROJECT MANAGEMENT:



**Well-arranged time is the surest sign of a well-arranged mind. - Pitman**



**MASONRY** UNDERTAKES MANAGEMENT OF STONEMWORK FOR LARGE  
CONSTRUCTION PROJECTS. TIME AND COSTS ARE CRUCIAL TO OUR CLIENTS AND  
NO ONE **UNDERSTANDS** THAT BETTER THAN MASONRY,



WHOSE EXPERIENCE IN BIG COMMERCIAL AND PUBLIC SPACE CONTRACTS  
STANDS IT IN GOOD STEAD AS IT WORKS TO ENSURE ON-TIME DELIVERIES  
AND **EFFICIENCY** ON THE JOB.



# MASONRY TECHNICAL DRAWINGS:



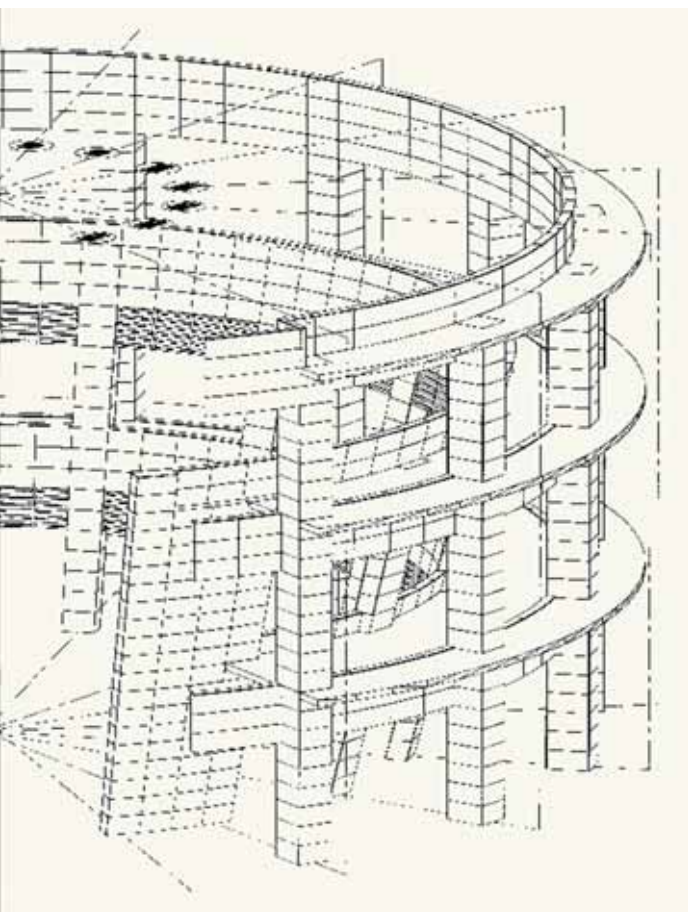


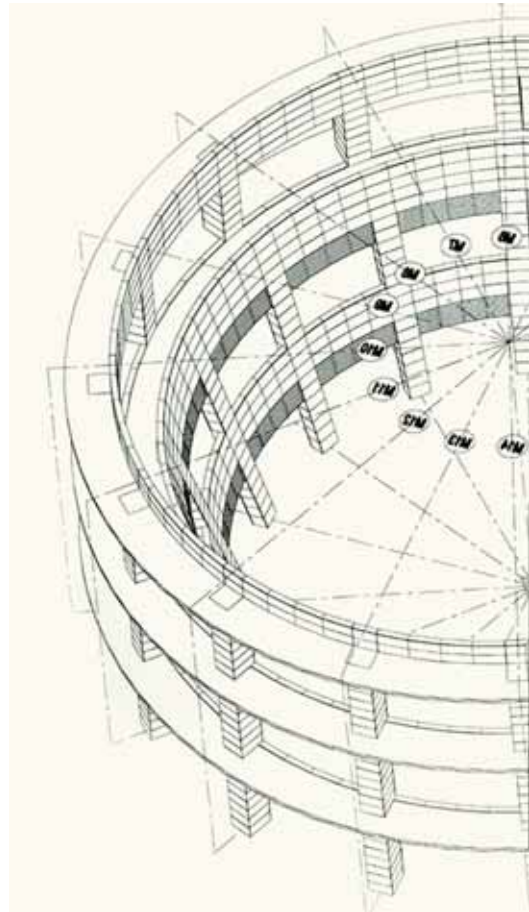
The present is the block with which we build. - Longfellow

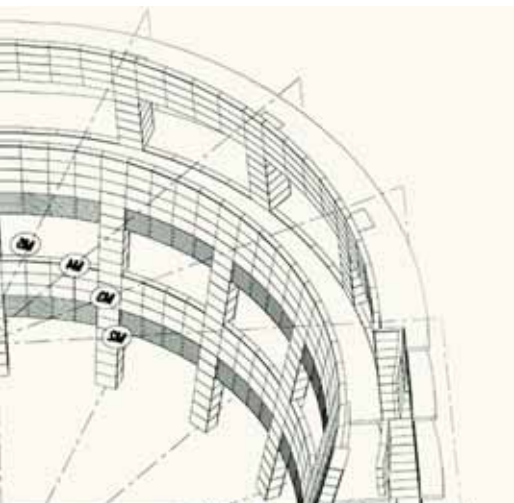
**Masonry** retains a team of experienced, in-house draftsmen to produce precise, well-thought-out shop drawings. Masonry does not subcontract its drawings as it believes a committed team of professionals working in close communication with design consultants and the rest of the company will yield clients cost and time savings. The team's well-made drawings for large commercial stonework projects also contribute to the company's cost-efficiency in its other services such as procurement and **installation**.



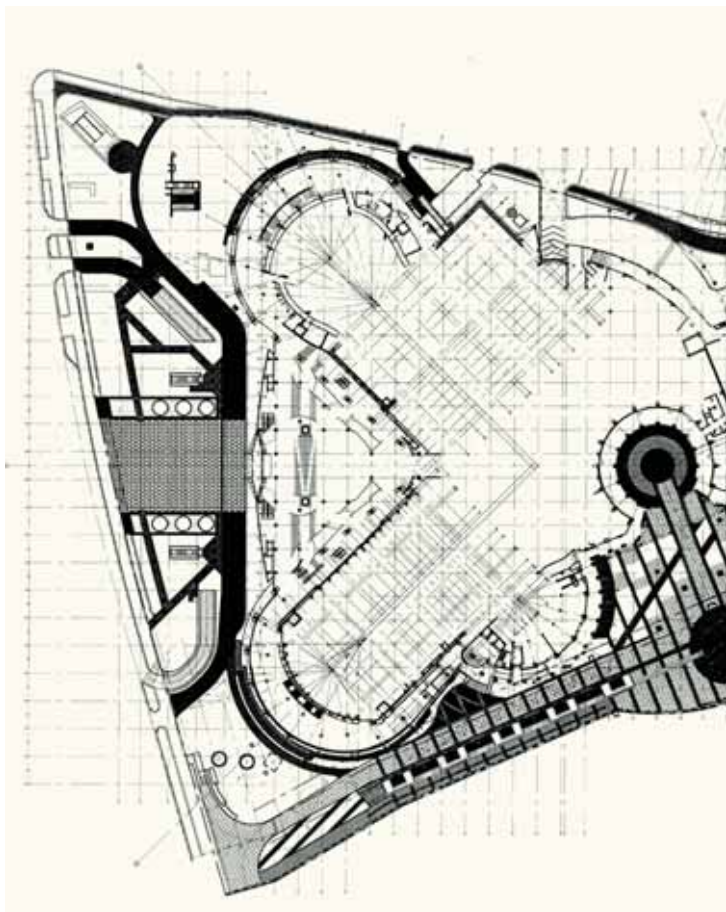


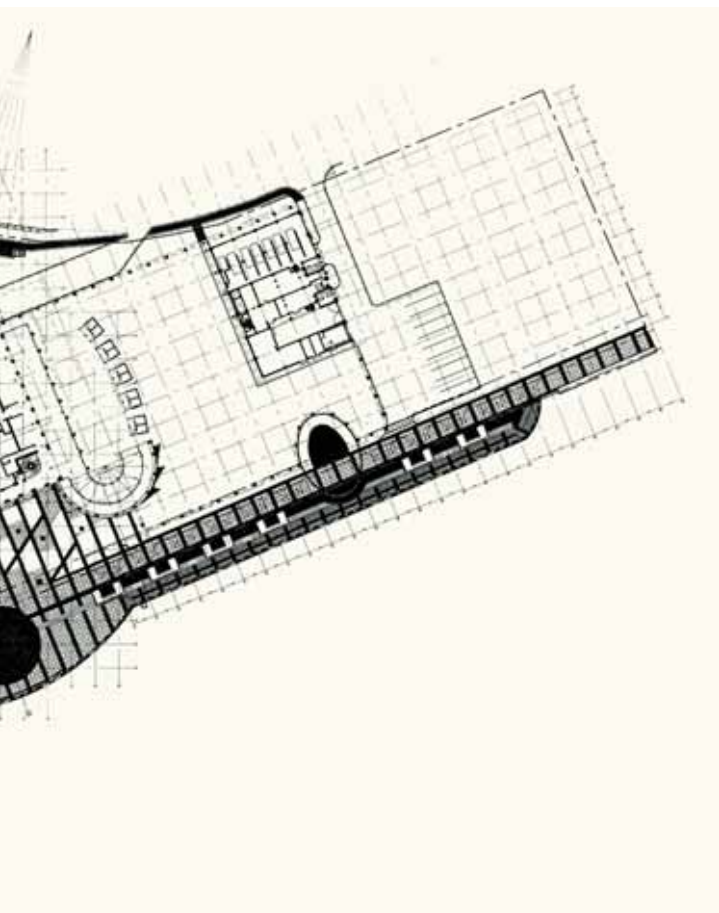


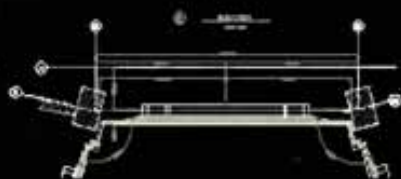
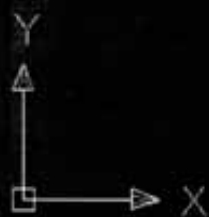
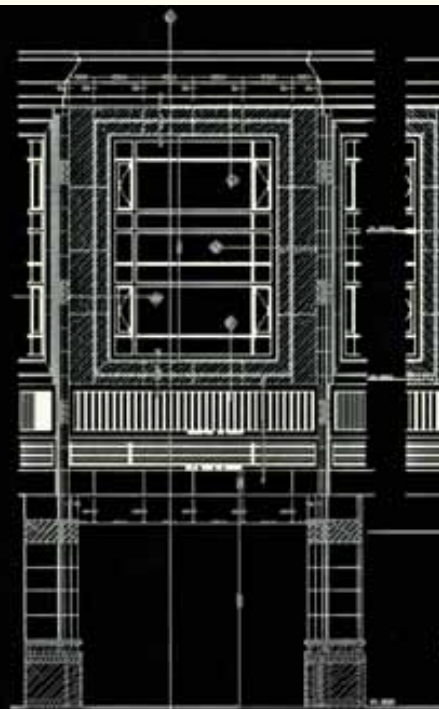
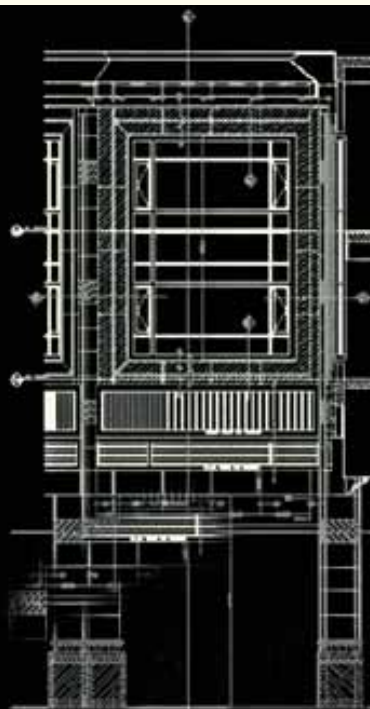


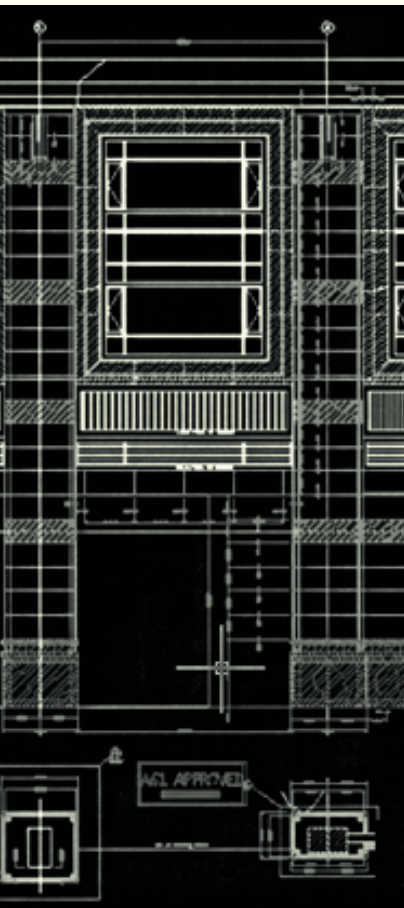


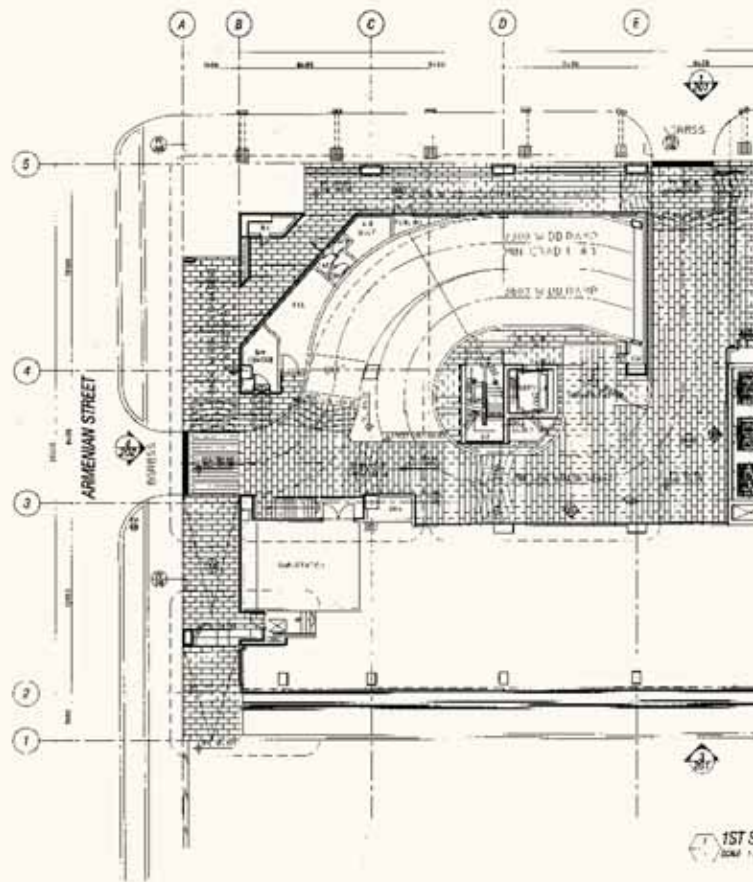




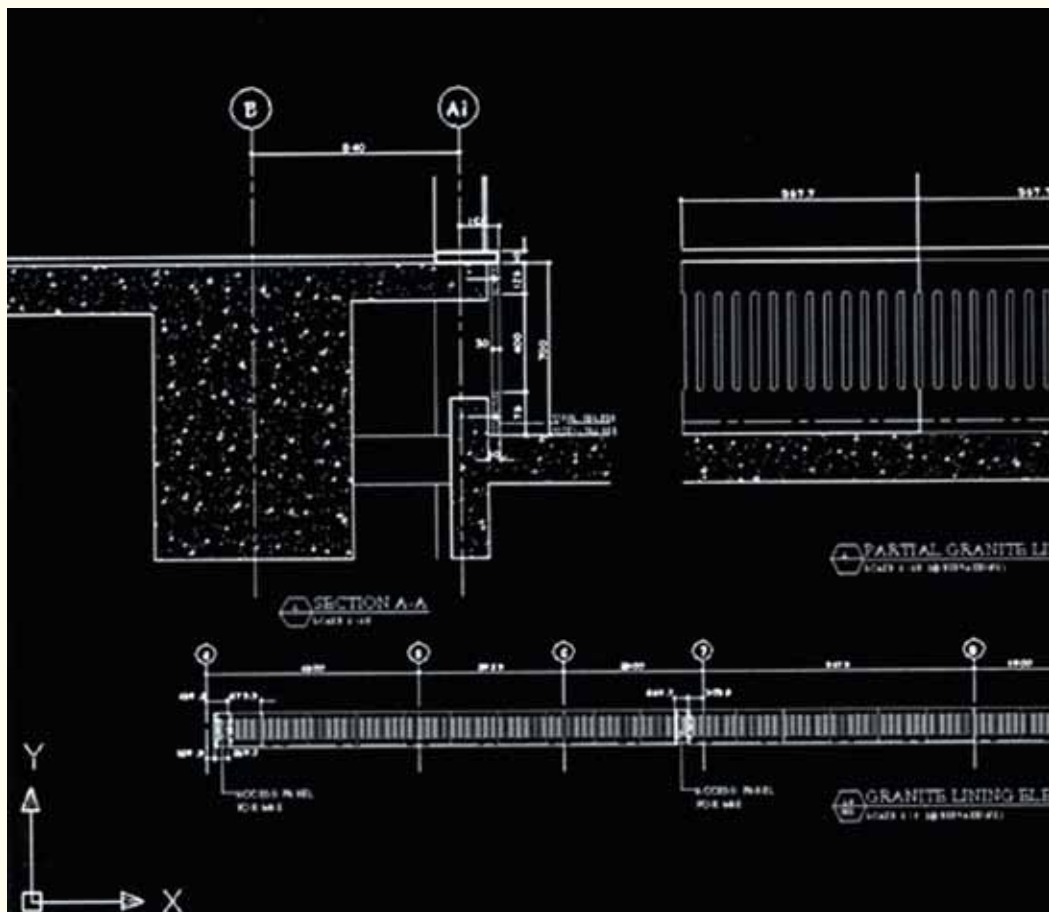




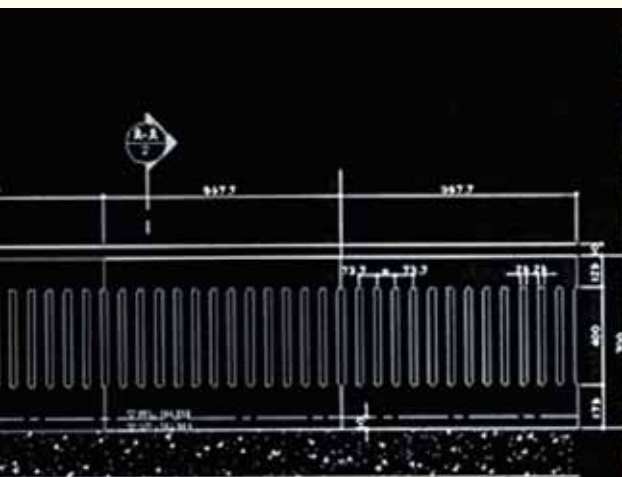




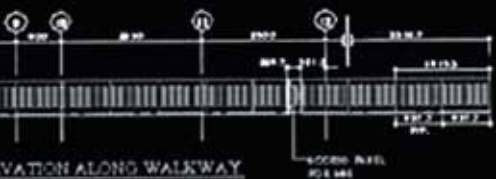








SECTION WITH ACCESS PANEL



SECTION ALONG WALKWAY








## MASONRY PROCUREMENT:



**There will come a time when you believe everything is finished.  
That will be the beginning. - Louis L'Armour**



THE DIRECTORS' **NETWORK** AND EXPERIENCE IN PROCUREMENT  
ARE THE KEY COMPETITIVE EDGES OF **MASONRY**. THEY SOURCE NATURAL  
STONE FROM AROUND THE WORLD, RELYING ON THEIR NETWORK, AND  
IN-DEPTH EXPERIENCE AND KNOWLEDGE OF THE INDUSTRY.



THEY CAN IDENTIFY RELIABLE SOURCES AS WELL AS ADVISE ON QUALITY,  
AVAILABILITY, COST AND **SUITABILITY** OF STONES TO MEET CLIENTS' DEMANDS,  
TIME CONSTRAINTS AND BUDGETS.

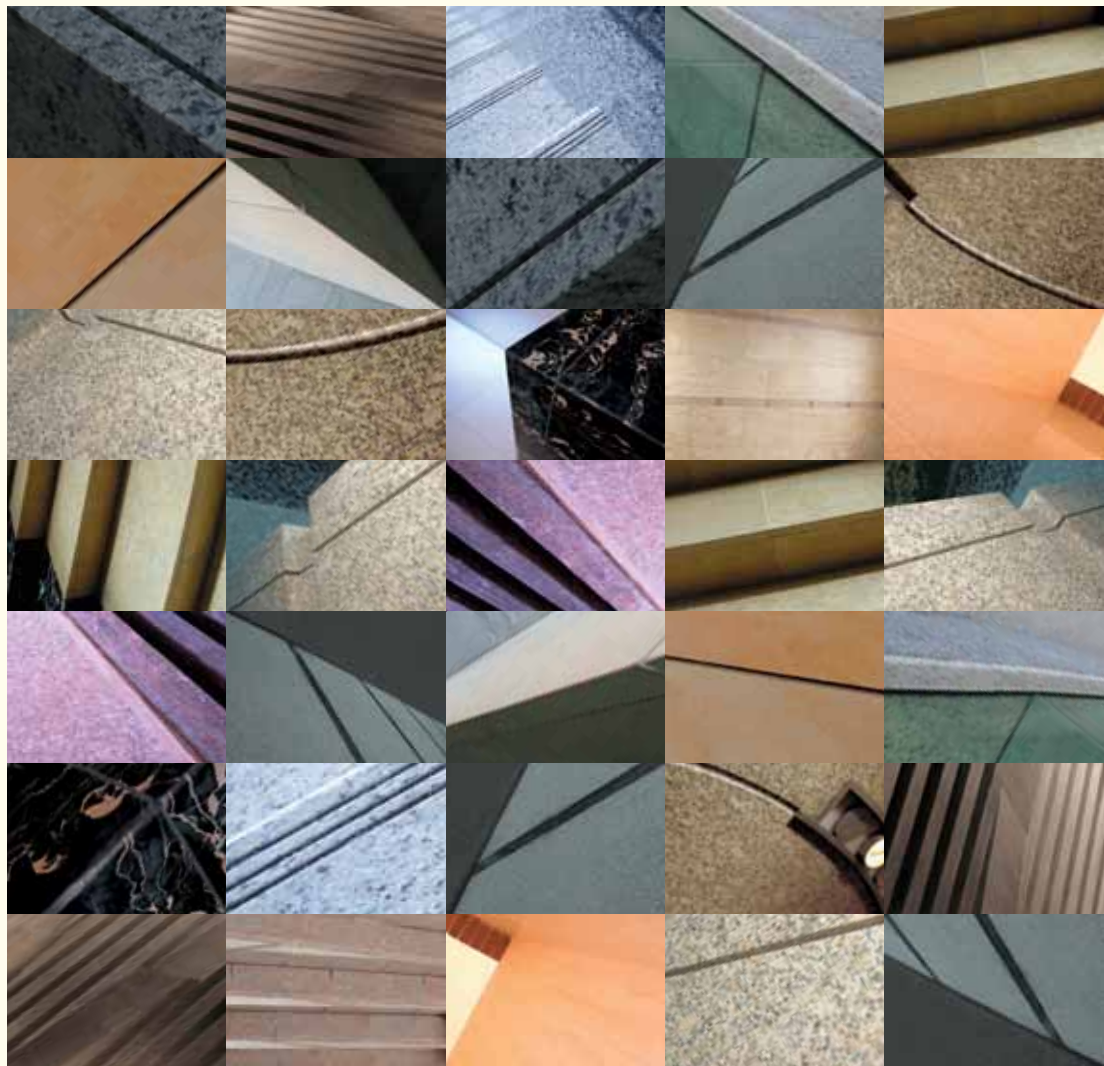


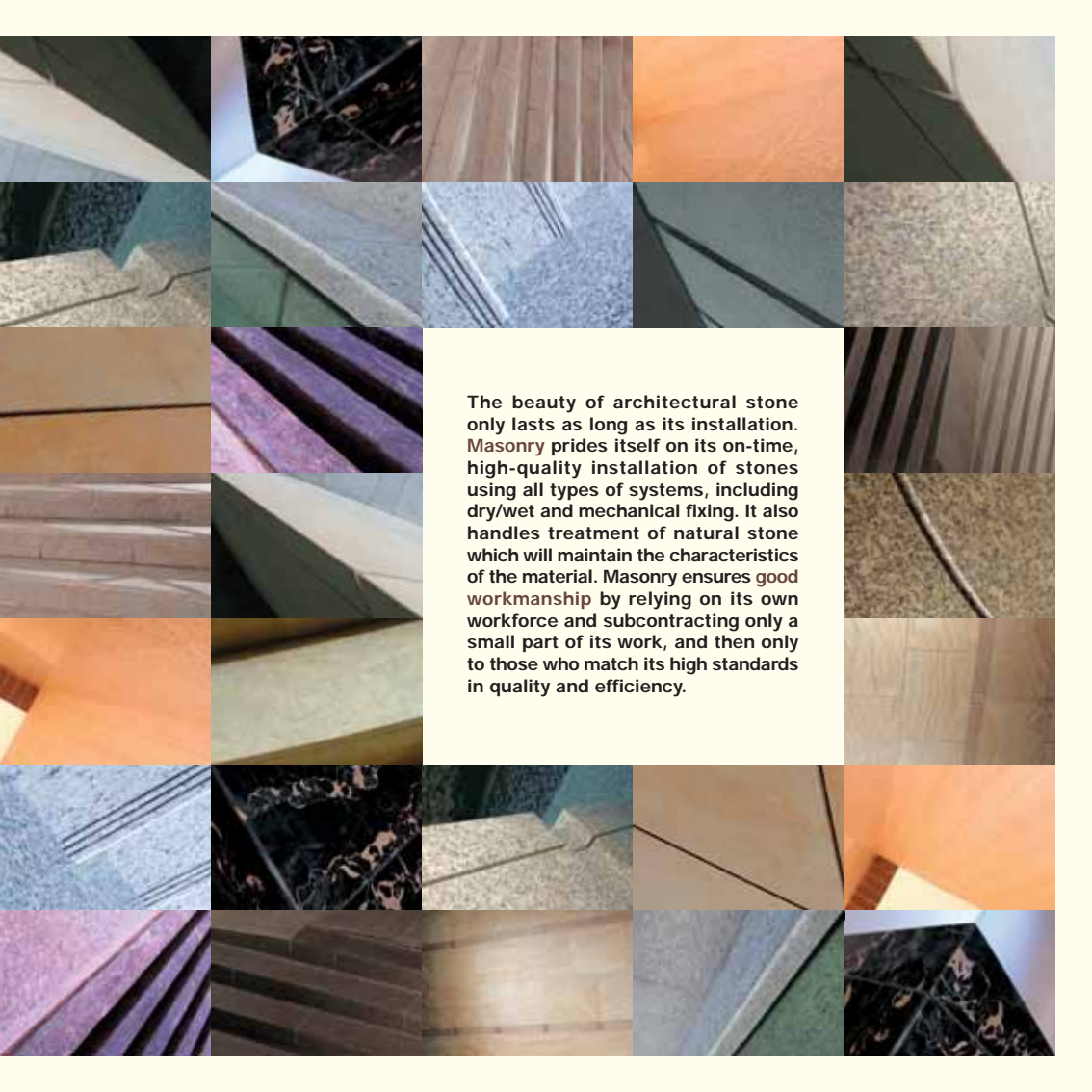
MASONRY  
INSTALLATION:





When time who steals our years away, shall steal our pleasures too.  
The memory of the past will stay and half our joys renew. - Thomas Moore





The beauty of architectural stone only lasts as long as its installation. Masonry prides itself on its on-time, high-quality installation of stones using all types of systems, including dry/wet and mechanical fixing. It also handles treatment of natural stone which will maintain the characteristics of the material. Masonry ensures good workmanship by relying on its own workforce and subcontracting only a small part of its work, and then only to those who match its high standards in quality and efficiency.



MASONRY  
CONSULTANCY:




Time travels in diverse paces with diverse persons. - Shakespeare





**MASONRY** ALSO PROVIDES **ADVICE** ON DESIGN AND USE OF NATURAL STONES.




USING ITS **EXPERTISE** IN ALL AREAS OF ARCHITECTURAL STONE, **MASONRY** OFFERS  
COST ENGINEERING, DESIGN OF INSTALLATION SYSTEMS, SUPERVISION OF WORK  
AS WELL AS INSPECTION OF MATERIALS AT THE SOURCE OF PRODUCTION.



**To everything there is a season, and a time to every purpose. - Ecclesiastes iii. 1.**







While **Masonry** is based in Singapore and most of its work is seen on the island, its founders have worked overseas in countries like Hong Kong, Malaysia, Indonesia and Kuwait. In 2002, Masonry won new stonework contracts in Vietnam, spearheading its international strategy.



**It takes a long time to bring excellence to maturity. - Publius Syrus**







# ONE DRAFT FILES LINK







One Raffles Link rivals the traditional financial space in Raffles Place, offering global financial institutions large floor plates for their equity and currency trading operations.



It was Masonry's first major project and it involved management, design and installation of stoneworks.





Designed by Kohn Pederson Fox Associates, the building was developed by Hongkong Land.  
The stones at One Raffles Link include Carioca Gold from Brazil, SPI from Portugal,  
Kasota from USA and others from Spain and Italy.













ONE  
RAFFLES  
LINK

NORTH





**The future is something which everyone reaches at the rate of 60 minutes an hour,  
whatever he does, whoever he is. - C.S. Lewis**







# EX PO ST ION





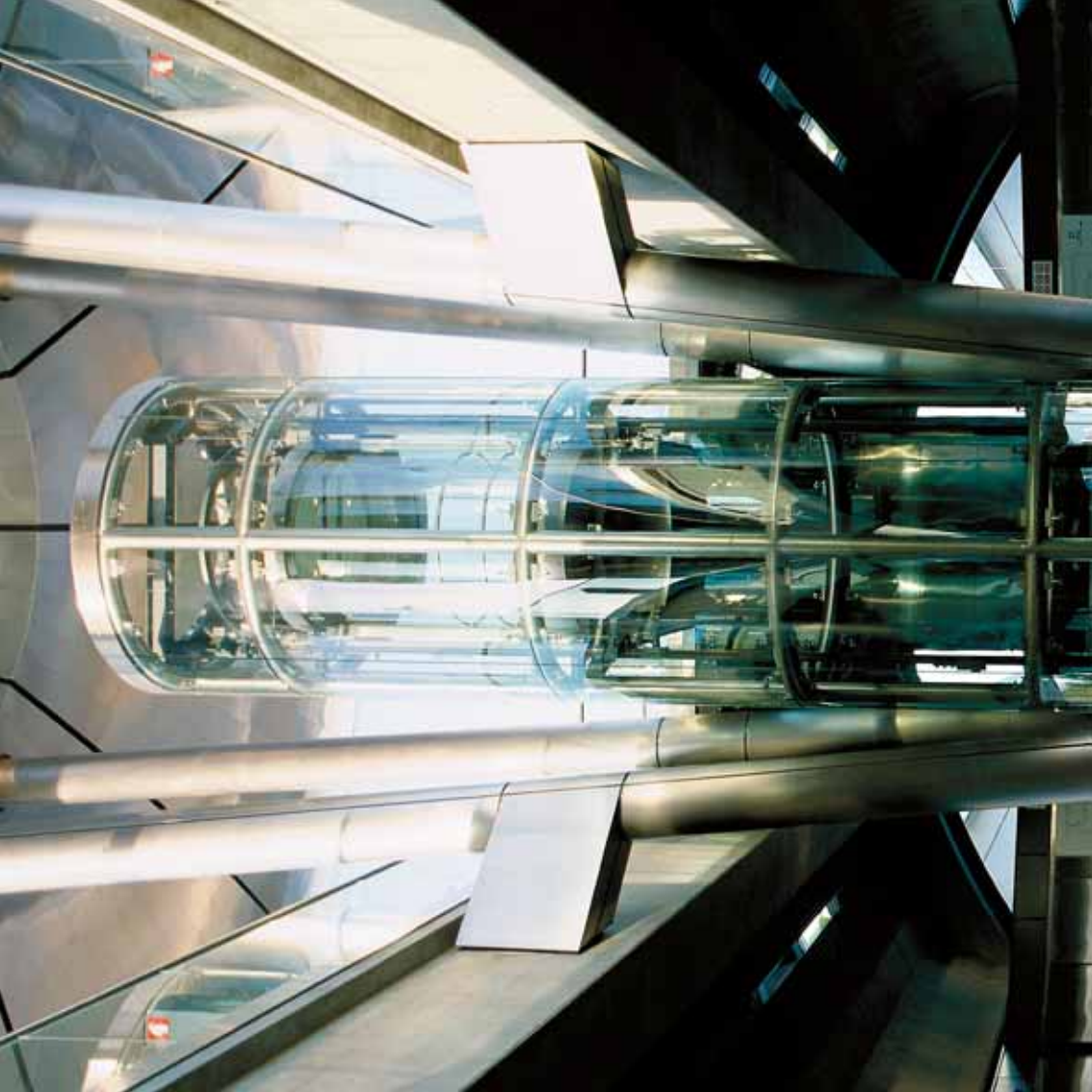
The station for Singapore's mass rapid transit system was designed


with an eye

A close-up photograph of a modern staircase. A curved, polished metal handrail is visible on the left. The wall behind the staircase is dark and has a fine, woven texture. A dark, angular architectural element is mounted on the wall, featuring white text.

on the future by the renowned Foster & Partners from the UK.







It was Masonry's first design, supply and installation contract.  
The granite, SPI, was purchased directly from its source in Portugal.

















Yesterday is history. Tomorrow is a mystery. And today? Today is a gift.  
That's why we call it the present. - Babatunde Olatunji








# 30 HIL L ST REFF




*The mid-sized office block in Singapore's civic district is the first in Singapore to have limestone on its facade.*





Architects Kohn Pederson Fox Associates' challenge to use limestone was met with



extensive research from Masonry to find the right stone to suit the local climate.





In the end, exotic limestone from Israel was used and a polymer-based impregnator was applied to all





surfaces of the stone to protect it from the high humidity and weather conditions in Singapore.





**We don't want tradition. We want to live in the present and the only history that is worth a tinker's damn is the history we make today. - Henry Ford**





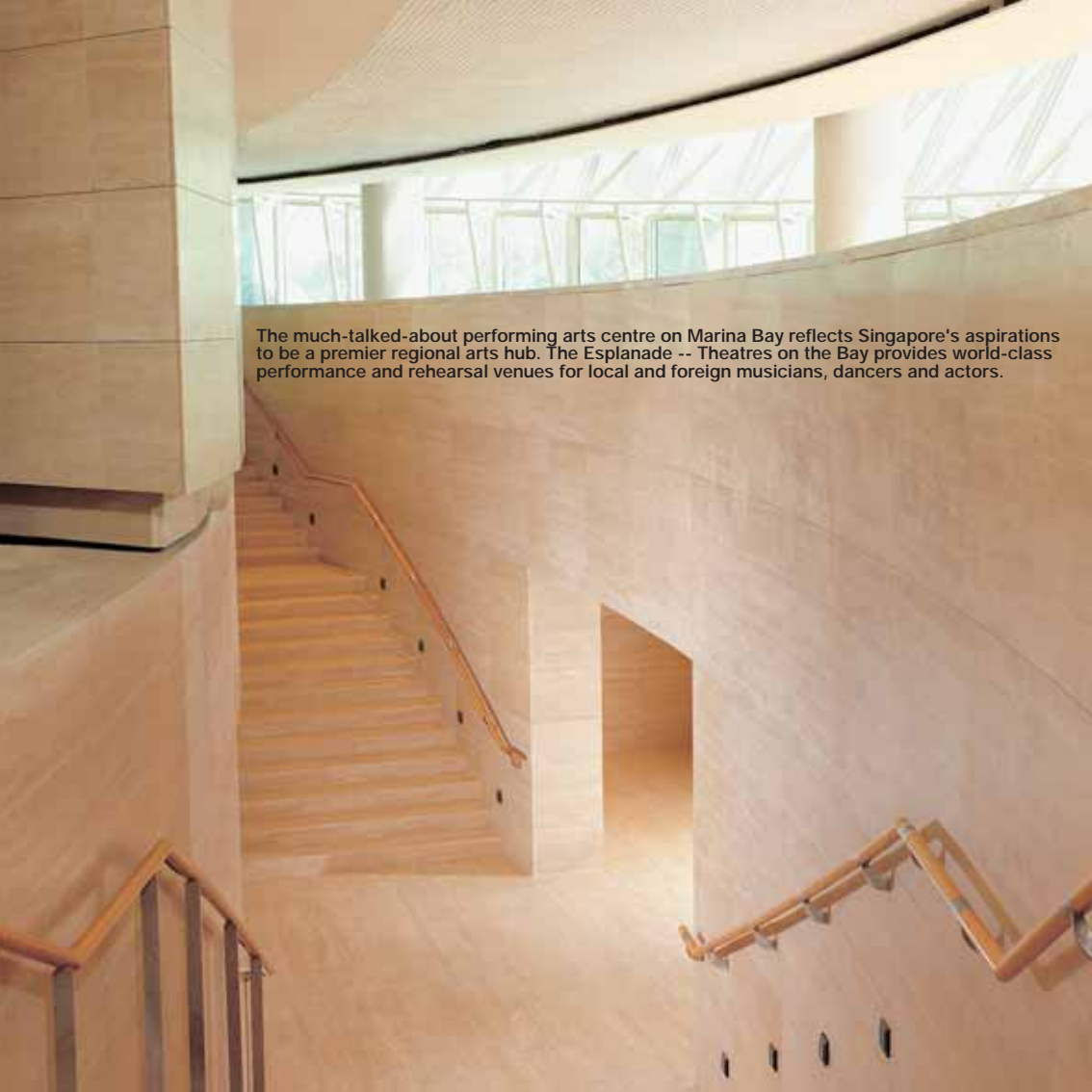
THE

ES

PLA

NADF





The much-talked-about performing arts centre on Marina Bay reflects Singapore's aspirations to be a premier regional arts hub. The Esplanade -- Theatres on the Bay provides world-class performance and rehearsal venues for local and foreign musicians, dancers and actors.








*The massive project sits at a prominent position close to both the historic district and the modern Marina commercial area.*





The bold design called for 45,000 square metres of stones from Brazil, India, Italy, Spain and China. Among the more interesting tasks for Masonry was to give the grand concourse a warm, more humanistic feeling. Pietra Dorata, a sandstone from Italy, was used to lend an almost timber-like look to the area.





A close-up photograph of a travertine paving surface. The stone has a light beige base color with prominent, wavy, reddish-brown veins. A dark, translucent epoxy resin has been applied to fill the natural cavities and crevices of the stone, creating a smooth, dark contrast with the lighter stone. The text is overlaid diagonally across the image.

And in a Singapore-first, clear epoxy was used to fill the natural cavities in the travertine paving, allowing it to




keep its natural characteristics while making it suitable for use as flooring.







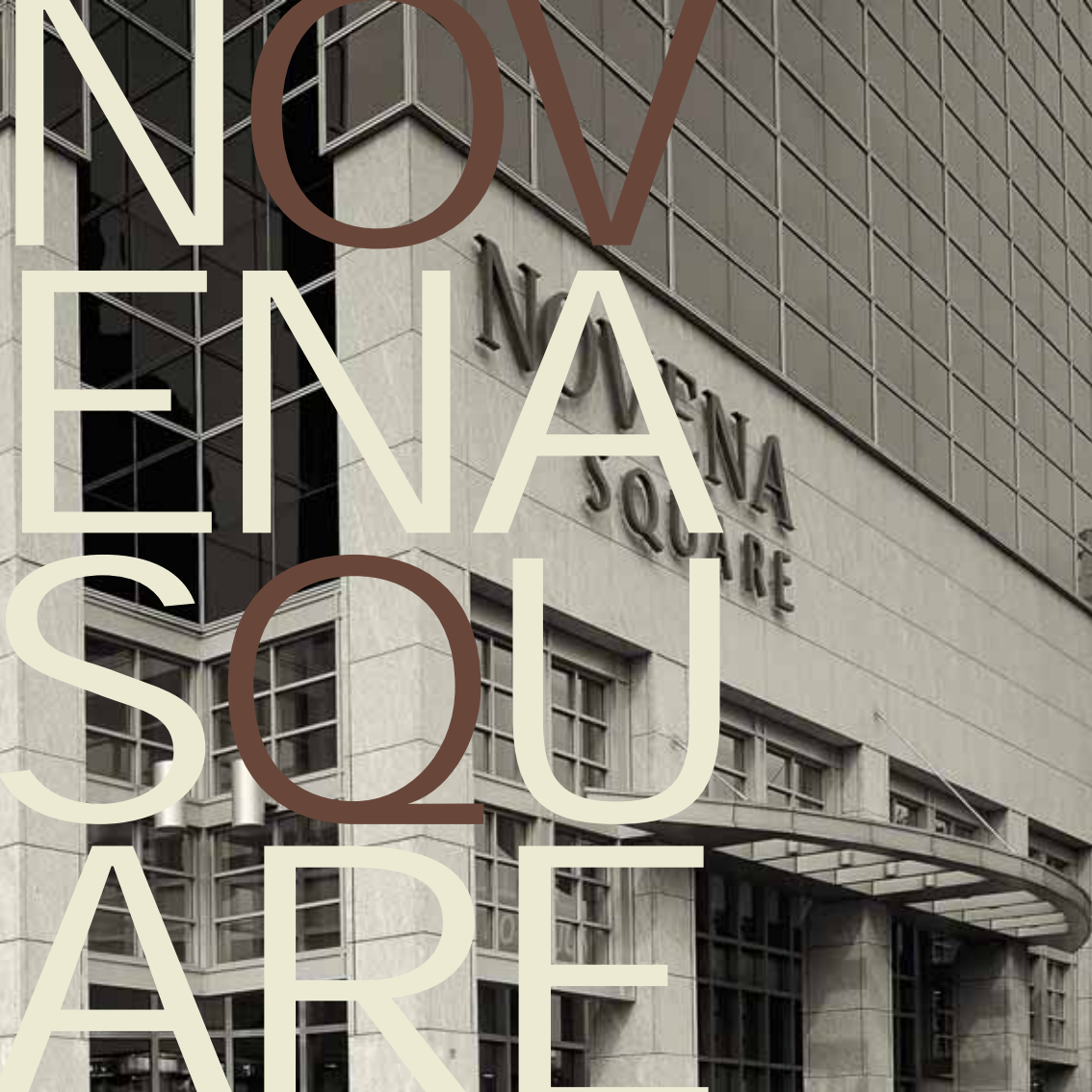


And for the columns that support the domed roof of the Concert Hall and Lyric Theatre, Masonry used a unique installation system to cover them with eight and a half foot by two inch slabs of Multicolour.



The time at our disposal each day is elastic; the passions we feel dilate it,  
those that inspire us shrink it and habit fills it. - Marcel Proust





# NOVENA SQUARE








*The office cum shopping complex sits at a prominent road junction and is heavily trafficked by pedestrians coming to and from the train station in the basement.*





Masonry installed the external paving as well as the marble and



*granite in the restrooms and to all the lift lobbies of the office and retail areas.*












Take time enough: all other graces  
Will soon fill up their proper places. - John Byrom








# THE FULL ERTON HOTEL

A wide staircase with light-colored stone steps and a dark marble side wall. The steps are made of large, rectangular tiles with a natural stone pattern. The side wall is made of dark, polished marble with white veining. The lighting is warm and focused on the steps.

*The former General Post Office was gracefully restored and transformed into a classic grand hotel.*

A photograph showing a set of wide, shallow stone steps made of large, light-colored rectangular tiles. The steps lead up from a light-colored tiled floor. In the background, a dark, veined marble wall or staircase riser is visible. The lighting is warm, casting soft shadows on the steps.

Masonry assisted the appointed contractor in sourcing for the materials specified and also prepared the shop-drawings for fabrication and eventual installation.
















**This day is all that is good and fair. It is too dear, with its hopes and invitations,  
to waste a moment on yesterdays. - Ralph Waldo Emerson**



# HAW PAR CEN TRE



The headquarters of Haw Par, famous throughout Asia for its ubiquitous tiger balm, was Masonry's first supply and installation contract.







A close-up photograph of a stone architrave, likely made of Italian sandstone, showing a textured surface with small dark specks. The architrave is part of a larger structure, possibly a lift lobby, and is surrounded by other stone elements. A text overlay is present in the upper right corner.

Haw Par Centre features exotic materials, including Norwegian quartzite in the external walkway, cobblestone from China for the driveway, Brazilian granite on the walls of its lift lobby and Italian sandstone in the lift architrave.







MIA  
SON  
RYPR  
OJEC  
TS

**The Esplanade - Theatres on the Bay**  
Raffles Avenue Singapore

**Ministry of Home Affairs**  
Novena Rise Singapore

**Novena Square**  
Thomson Road Singapore

**One Raffles Link**  
Raffles Boulevard Singapore

**The Fullerton Hotel**  
Fullerton Square Singapore

**One Fullerton**  
Collyer Quay Singapore

**Singapore Post Centre**  
Paya Lebar Singapore

**JTC Summit**  
Jurong East Singapore

**MRT C502 - Expo Station**  
Xilin Avenue Singapore

**Franco Vietnamese Hospital**  
Ho Chi Minh City Vietnam

**Bitexco Office Building**  
Ho Chi Minh City Vietnam

**Petro Vietnam**  
Vung Tau Vietnam

**Paragon Shopping Centre**  
Orchard Road Singapore

**30 Hill Street**  
Hill Street Singapore

**Springleaf Tower Project**  
Anson Road Singapore

**Maybank Building**  
Battery Road Singapore

**Exchange Square**  
Shenton Way Singapore

**Haw Par Centre**  
Clemenceau Avenue Singapore

**2 Exclusive Residences**  
Ford Road Singapore

MASONRY