

石

MASONRY

2



acknowledgement

Masonry's Book 2 presents talent in stonework at its best. These pages showcase the hard work and brilliance of many individuals who have committed their specialist skills, ideas and knowledge in stonework. The management team is extremely grateful for the

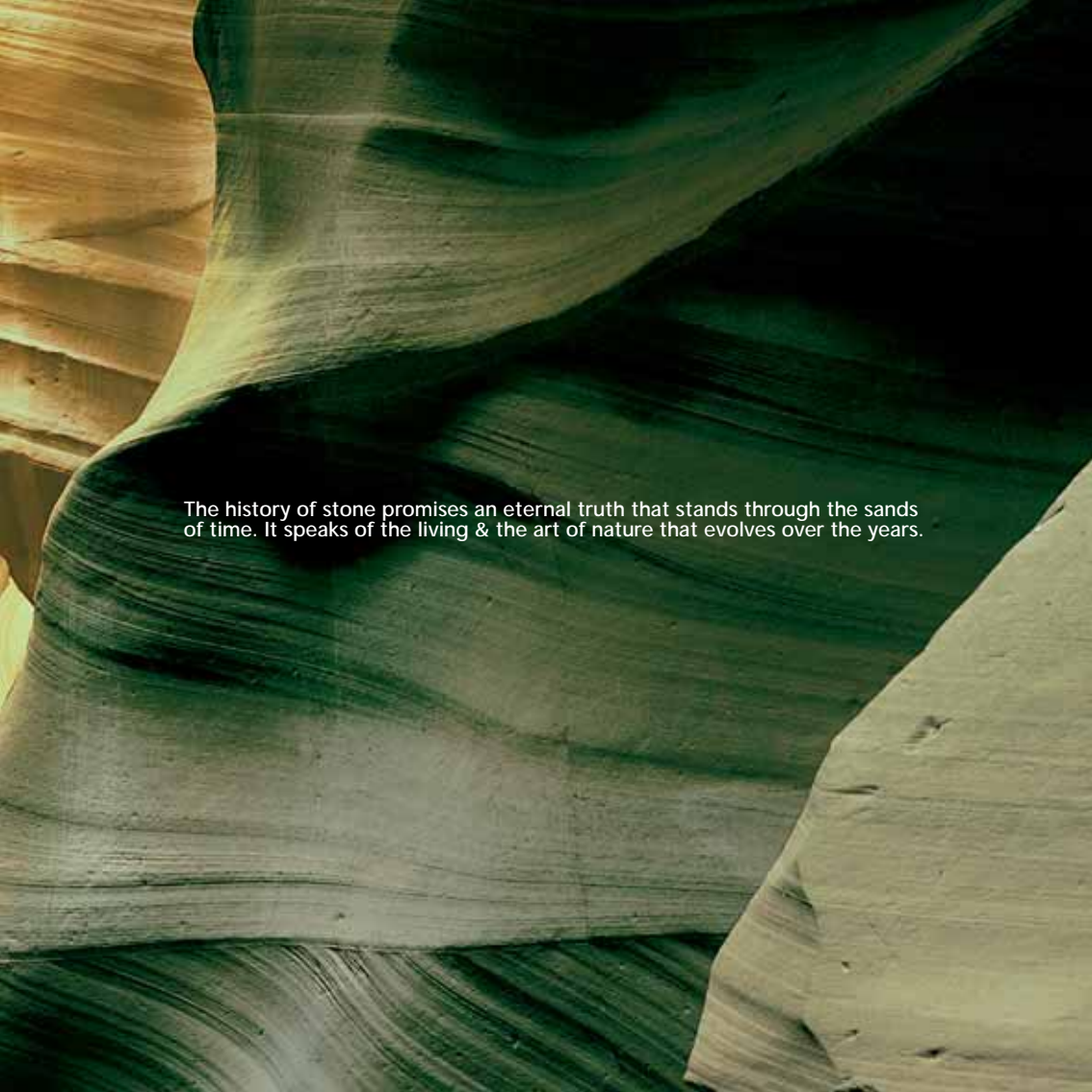
continued support and loyalty from its customers, business associates and suppliers. Also kudos to all who have had a hand in building the foundation of Masonry over the past decade and those who will contribute to the success of our future endeavours.

the Living stone

**"A JOURNEY
OF A
THOUSAND
MILES BEGINS
WITH A
SINGLE STEP."**

Confucius,
Chinese Philosopher





The history of stone promises an eternal truth that stands through the sands of time. It speaks of the living & the art of nature that evolves over the years.

STONE
ITS BEAUTY
STANDS
MAJESTICALLY

the egyptian sphinx

The Great Sphinx of Giza in Egypt is one of the world's most exquisite stone sculptures made by man. Only something as enduring as stone is able to transport this monumental icon across centuries - stirring up the

imagination of adventurers, poets and historians. The Sphinx today, as it was in the past, continues to be Egypt's national treasure and a great wonder of the world.





the colosseum in rome

The magnificent Roman amphitheatre (80 AD) has been standing on the same grounds for centuries. The glorious facade is widely considered as one of Rome's finest artworks in architecture

and engineering. Built from fine stonework carved from limestone and marble, the Colosseum remains one of greatest landmarks of all time and history.





**NOT ONLY
IN THE PAST
BUT ALSO
IN THE
WONDERS
OF THE
PRESENT**

Modern Inspirations: Like the ancient wonders of the world, many modern day architecture is built on exquisite stonework.

guggenheim museum bilbao

Designed by world famous architect Frank Gehry, the art museum in Spain sits like a free sculpture of curvaceous metal-clad forms. Like the American architect's other works, the

structure consists of radically sculpted contours. The museum was built in 1997 and is labelled as an expressionist modern work of art carved from glass, titanium and limestone.





AND THE
EVERLASTING
PROMISE OF
LEGACY

Modern Inspirations: Masonry is committed to this promise.

vivoCity

With over 1 million square feet of dazzling floor space covered in quartz and granite, Masonry is honoured to have undertaken one of the biggest developments in Singapore. Designed by internationally renowned

Japanese architect Mr. Toyo Ito, VivoCity is Singapore's largest retail and entertainment destination. Its futuristic and bold design makes it the undisputed centerpiece of the island's harbourfront precinct.





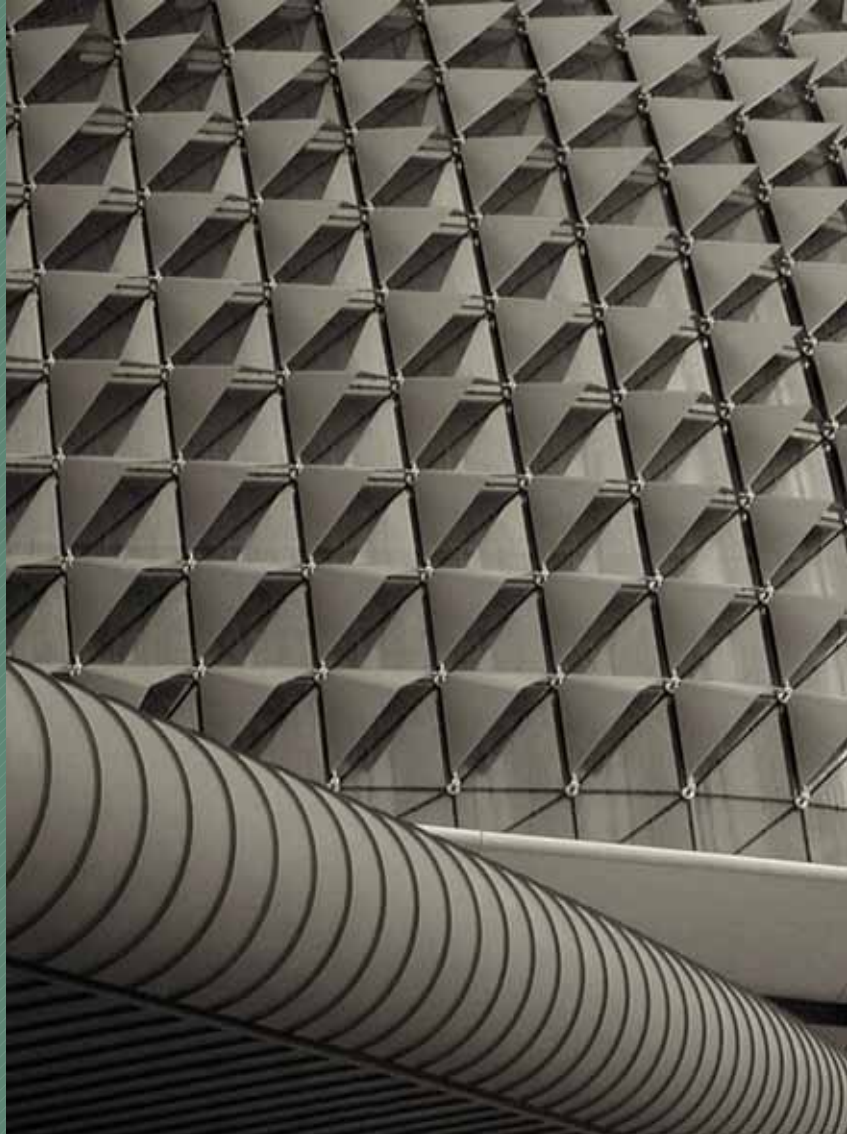
Like the living stones in history, Masonry prides itself with a history of lasting architectural achievements. The company is committed to providing the strong and sturdy building blocks of today's finest buildings - **that go on to live for tomorrow.** With a sound understanding and knowledge of different stones, Masonry is able to promise a careful selection of materials for each and every project it undertakes.

+the esplanade

Singapore's iconic statement to the world of performing arts resides by the bay. With its distinctive dome-shaped roof, the arts and retail complex stands out prominently in the city's

skyline. The Esplanade boasts some 500,000 square feet of floor space finished in granite and marble specially procured from Spain, Italy, Brazil and China. Masonry is proud to have

been involved in the supply and installation of stonework for this highly esteemed project which stands tall among its global peers in the likes of the Sydney Opera House.






For the past 10 years, Masonry has grown steadily to become one of the industry's leading integrated architectural stone services company. Standing firmly on solid foundation, the company's team of motivated and progressive individuals is set on helping its clients realize their fullest potential and dreams.

Masonry - your cornerstone to success.

bringing Life to stone

**"I SAW THE
ANGEL IN
THE MARBLE
AND CARVED
UNTIL I SET
HIM FREE."**

Michelangelo,
Renaissance Painter,
Sculptor & Architect

A low-angle photograph of a large, weathered stone sculpture of a person's head and shoulders, set against a background of a modern building with a grid-like facade. The sculpture is dark and textured, with visible weathering and some small holes. The building's facade is composed of a grid of light-colored panels, creating a strong geometric pattern. The lighting is warm and directional, casting shadows that emphasize the sculpture's form and the building's structure.

The natural stone offers many possibilities.



It is an open white canvas in search of an artist.





At Masonry, these possibilities are magnificently unlocked like how a sculptor would set his designs on stone. The look, feel and colour of these stones have the abilities to draw out the beauty of a concrete space within which we work, live and play. Equipped with an intimate

knowledge of the industry, Masonry has mastered the art of stonework - from procurement, design to installation. It has the right pool of talented individuals with the right expertise to manage and execute stonework ideas for all kinds of contemporary designs.

和谐中国

With its vast industry experience and network of suppliers from all over the world, mainly Italy, Spain, Portugal, Brazil, China, Vietnam and India - Masonry offers seamless services along the lines of consultancy, procurement, technical drawings, project management and installation. It is known regionally for its ability to provide the full spectrum of stonework - the complete works entailed in beautifying urban spaces.

consultancy



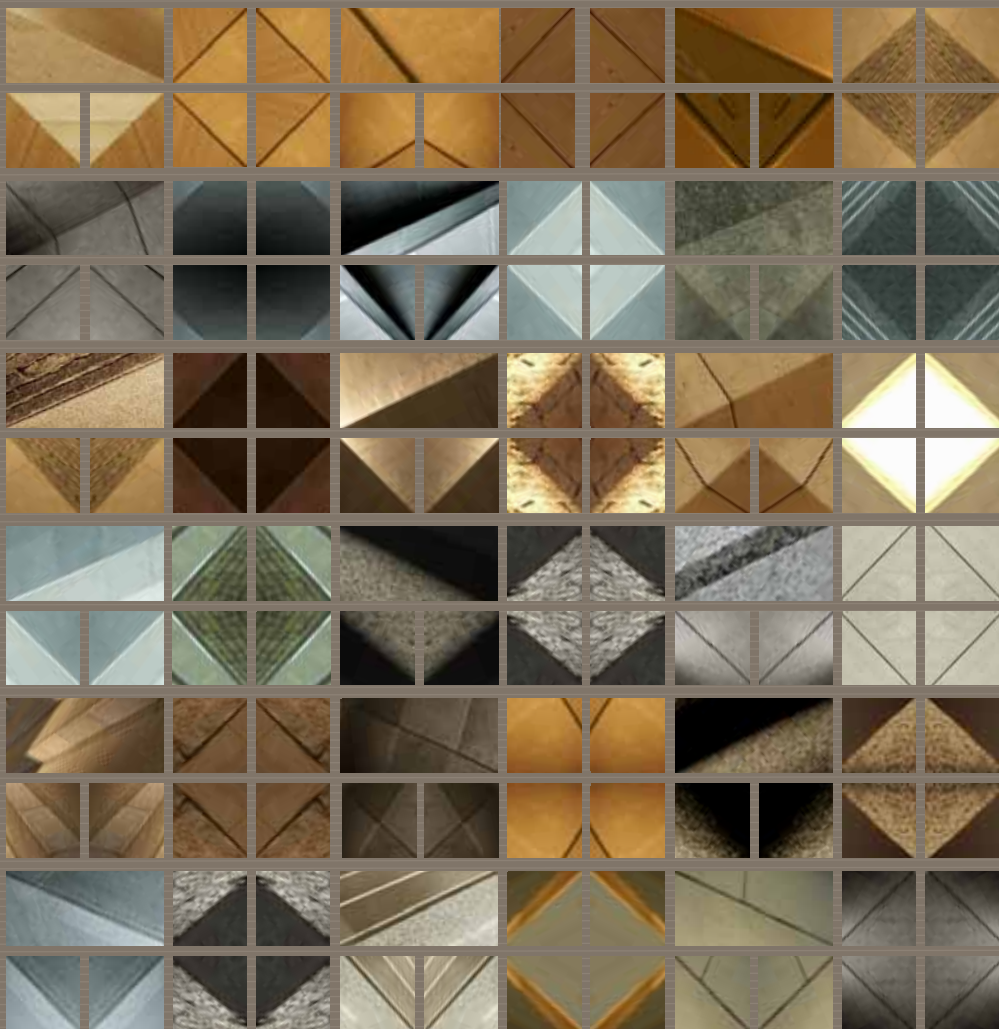


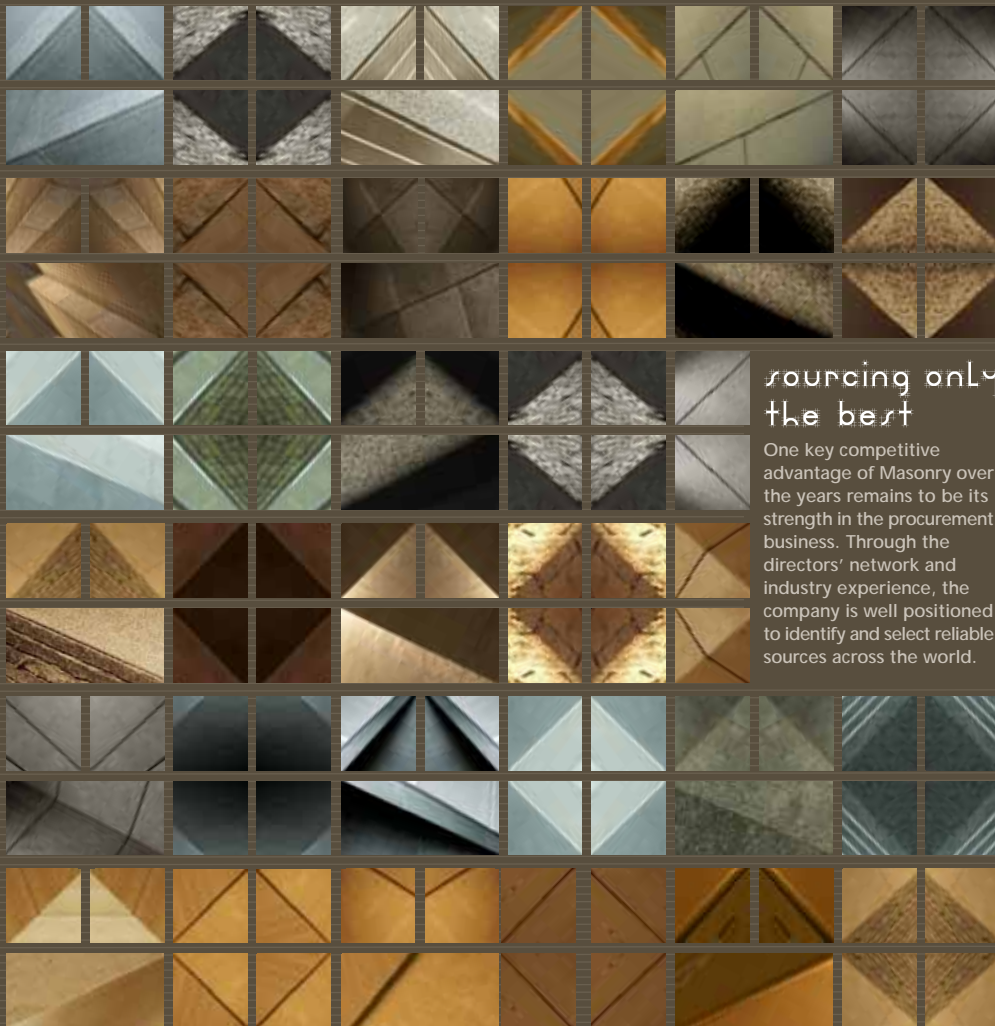
understanding your needs

In recent years, Masonry has gone beyond providing mere advice on the design and use of natural stones. Under its consultancy services - the company also offers cost engineering, design of installation systems, supervision of

work, as well as inspection of work at the source of production. It also enjoys the benefits of established relationships with reputable stone consultancy practices in Europe and an appointed network of partners that imports materials from Asia.

procurement





sourcing only the best

One key competitive advantage of Masonry over the years remains to be its strength in the procurement business. Through the directors' network and industry experience, the company is well positioned to identify and select reliable sources across the world.

ROSA NORVEGIA/NOCCIALATO/
BIANCO EUROPA/BIANCO CRISTAL/
BIANCO PERLATO/MONTEROSA/
BOTTICINO CLASSICO/TIGER SKIN/
VERDE ALPI/FIOR DI PESCO CARNICO/
TRANI SERPEGGIANTE/SILVERINO/
BLACK LEVEDIA/DARK EMPERADOR/
CREMA MARFIL CLASSICO/
WHITE ONYX/EAGLE RED/
JURA GIALLO/CHINA GREY/
MOCA CREAM/CINZALA/
CALEDONIA/PERLATINO/
ARISTON/PORT LAURENT/
VOLAKAS WHITE/MEERA WHITE/
VISCOUNT WHITE/VERDE LAVRAS/
GRIGIO MALAGA/SILVER CLOUD/
KARIN WHITE/EMPERADOR LIGHT/
HONEY WHITE/VIRGINIA BLACK/
VERDE MERGOZZO/CREMA BELLO/
THASSOS WHITE/IMPALA BLACK

In the past five years, the company's network of suppliers has grown even wider and stronger - leading it to secure exclusive rights to some materials. Masonry has also started collaborative work with suppliers on new finishing methods as it studies new sources for materials.







12-20













**"VISION IS
THE ART
OF SEEING
THINGS
INVISIBLE."**

Jonathan Swift,
Author

technical drawings



detailr matter

Apart from its in-house experts, Masonry now also prides itself with a specialized offshore team headed by a Japanese industry veteran with over 20 years of experience in construction. The company believes in delivering results right from the onset.

Thus, it spares no effort in creating well-made shop-drawings that saves costs and time as it minimizes abortive work. All this is possible as Masonry's team is equipped with an in-depth understanding of the trade and practicability of installation systems.

project management

VIVOCITY/ONE RAFFLES QUAY/SENTOSA COVE/
SINGAPORE MANAGEMENT UNIVERSITY/ONE
RAFFLES LINK/THE ESPLANADE/THE FULLERTON
HOTEL/ONE FULLERTON/SINGAPORE POST



CENTRE/PETRO VIETNAM/30 HILL STREET/HAW
PAR CENTRE/NOVENA SQUARE/EXCLUSIVE
RESIDENCES/EXCHANGE SQUARE/PARAGON
SHOPPING CENTRE/MRT C502-EXPO STATION

mapping it out

Masonry undertakes the management of stoneworks for large construction projects. On-site supervision of work enables it to provide pre-planning, contingency plans and the organization of projects.

Hence, the company's team is able to spot potential problems and prevent them before they occur. All this means more cost savings and a more efficient roll-out of projects.

installatiOn



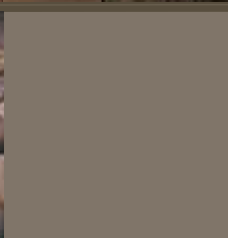
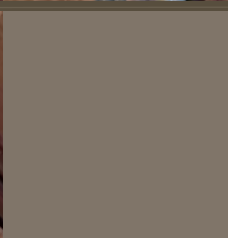
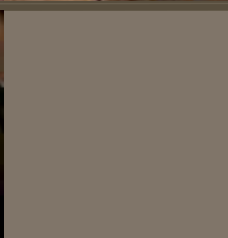
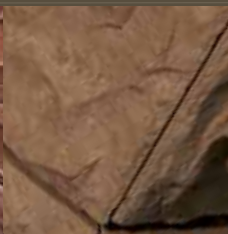


making it happen

The company has a reputation of its on-time, high quality installation of stones using all types of systems. It also handles treatment of natural stone which locks in the characteristics of the material. Masonry is always engaged in the study of new installation methods and increasing productivity.

Over the years, Masonry has found its forte in commercial and high-end residential projects where detail to the job is supreme. As a close-knit boutique stone company - it is primed to give that personalised touch to each valued project. No stone is left unturned. Masonry aims to build on its reputation as it takes on commercial and high-end residential projects going forward.






beauty of stone

**"YOU MUST BE
THE CHANGE
YOU WANT TO
SEE IN THE
WORLD."**

Mahatma Gandhi,
Indian Spiritual &
Political Leader





Over a short span of time, Masonry has helped shaped Singapore's architectural landscape. Through walkways, walls, promenades and lush lobbies, its legacy can be found on several new and significant developments across the city.

one raffer quay





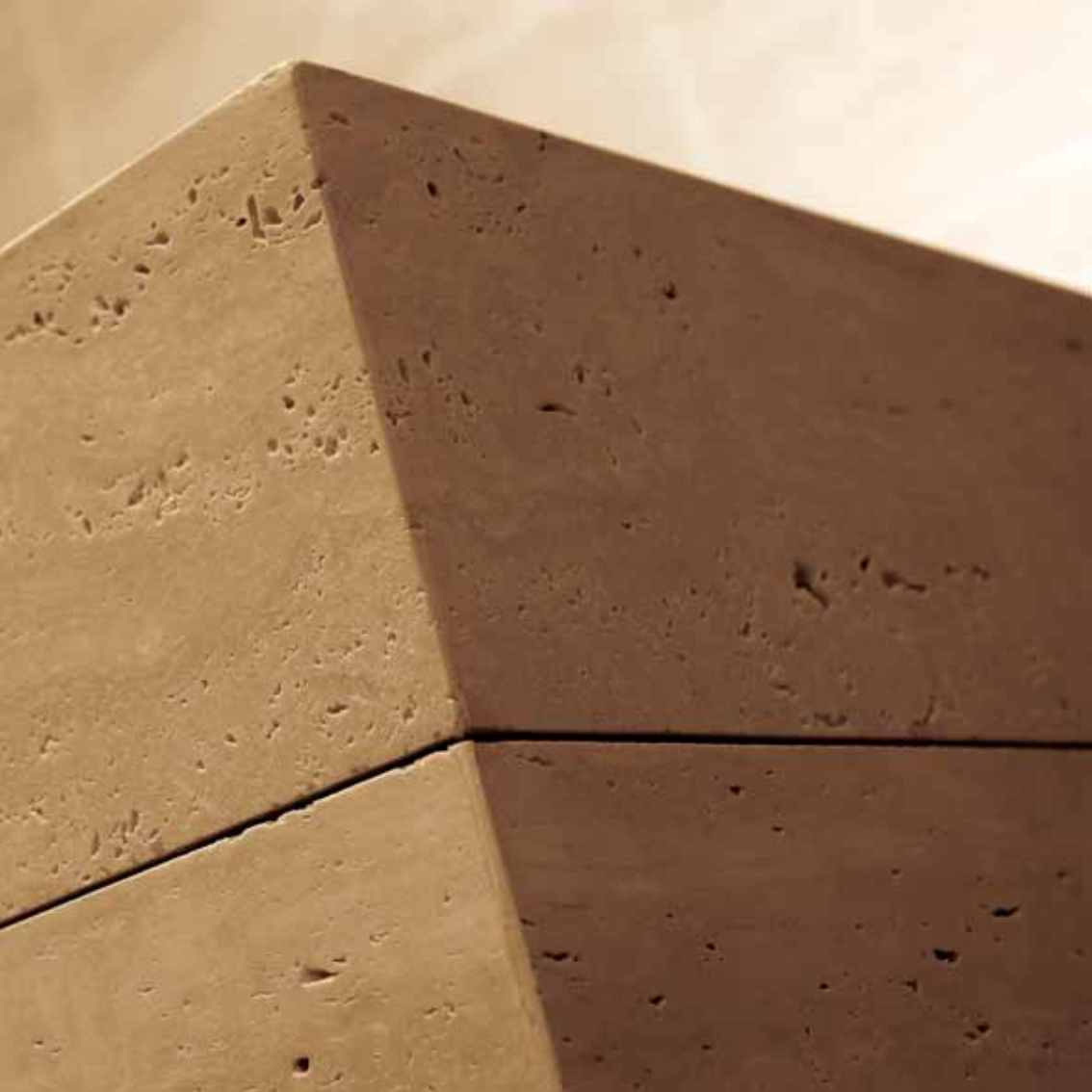






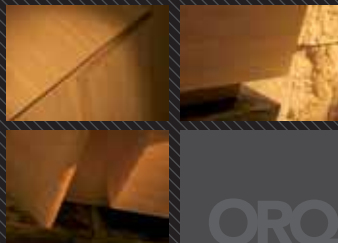






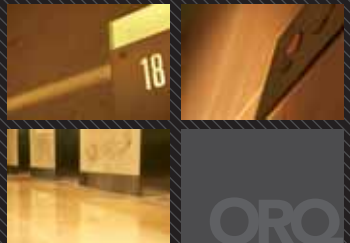


For timeless classic beauty,
the material Travertine graces
the walls and floors of the lobby.
An intermix of two beige
Travertine variants gives
elegance to the wide and
spacious area.





The exquisite surfaces of three natural stones - Crema Delicato, Este Light Marble and Fiore de Pesco Carnico - transform the lift lobbies into a deluxe office building space.





Project started: Mar 04
Project completion: Sep 06
Total volume: 15,000m²

Stones used:

- Maritaca
- Savana
- Verde Fontaine
- Fior De Pesca Carnico
- Crema Delicato
- Botticino Fiorito
- Verde Antique
- Este Light



rentora coue















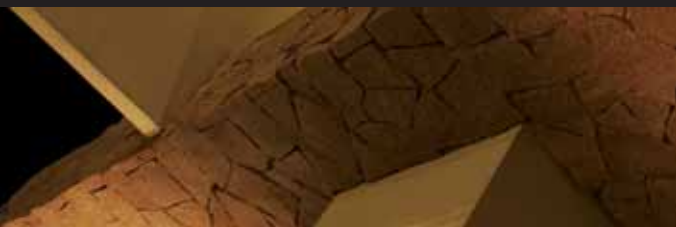
Intrinsic details on these natural stones - the Vietnam Salmon Red Rubble granite - create a dramatic ambience at the Sentosa Cove Arrival Plaza water feature.





Simple finishing touches on the granite slabs achieve a neat and elegant feel that perfectly blends with the resort-style ambience.





Project started: Nov 05
Project completion: Jun 06
Total volume: 11,000m²

Stones used:

- Orange Glow
- Barry Yellow
- Speckled Black
- Dark Grey
- Vietnam Salmon Red Rubble Granite



**"ANYONE
WHO KEEPS
THE ABILITY
TO SEE
BEAUTY
NEVER
GROWS OLD."**

Franz Kafka,
Writer

singapore management university







Different finishes on the grey granite installed in strip patterns give the Singapore Management University a distinctive architectural presence in the heart of the city.



Li Ka Shing
School of Business



Li Ka Shing
Library

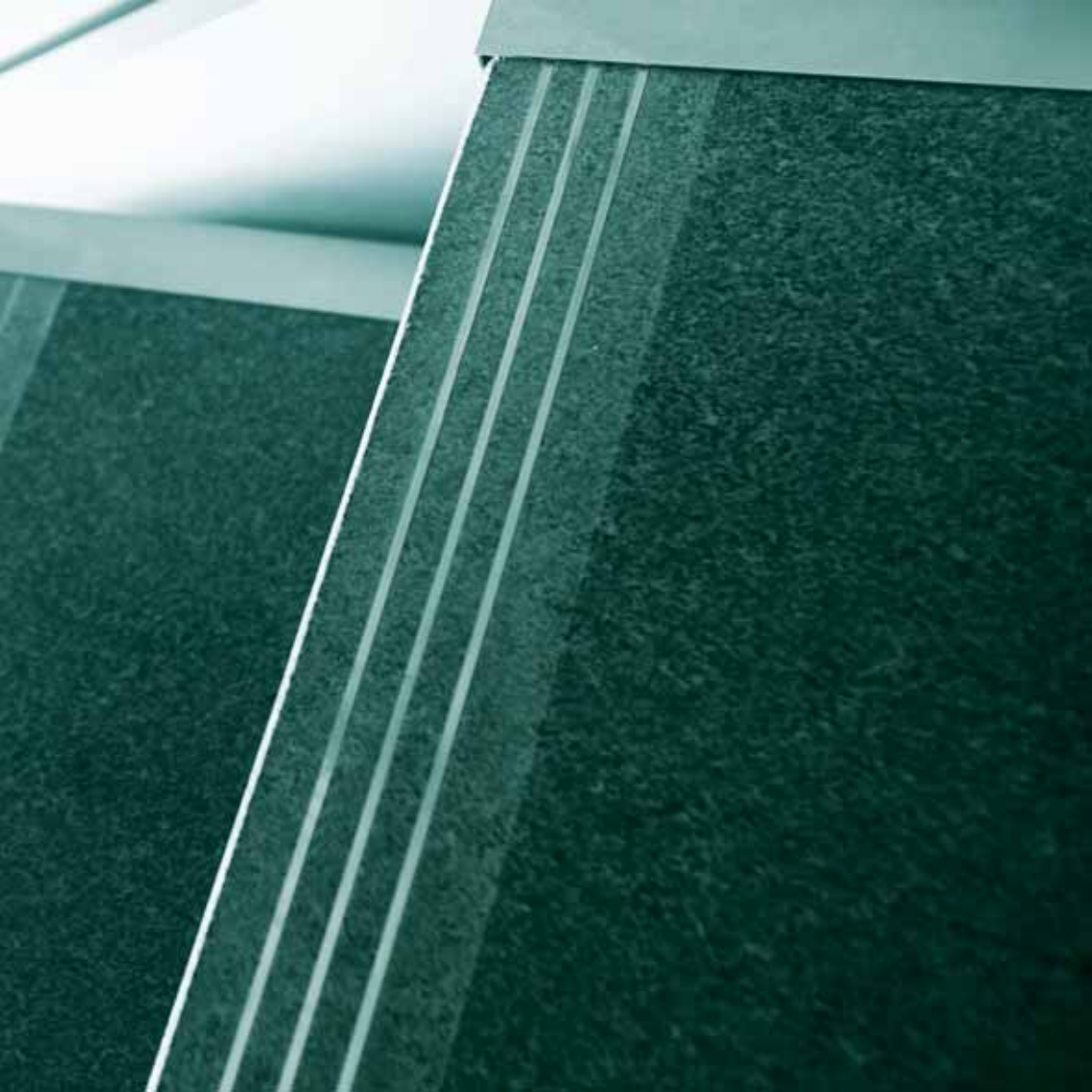
School of
Accountancy

School of
Information System

School of
Economics &
Social Sciences

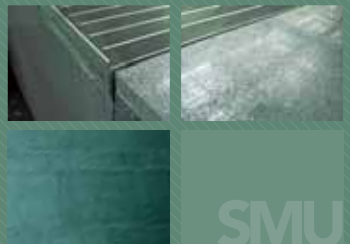


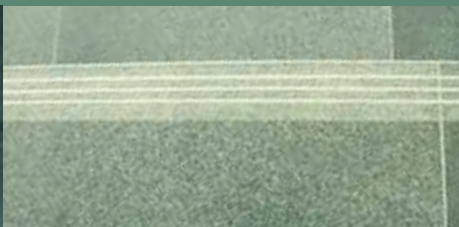






Lush shades of grey granite walls showcase the simple and elegant beauty in the design of the SMU building.





Project started: Dec 04
Project completion: Jan 06
Total volume: 5,800m²

Stones used:
- Oriental Grey Granite
- Oriental Mist Granite
- Pink Porrino Granite
- Black Granite





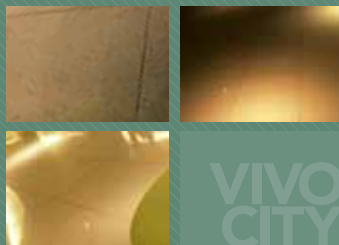








Italian Brillante Blanco and
Gemme Zirconio recomposed
quartz pave the mall's internal
floor - covering more than
26,000m²





Handpicked seashells from the shores of the Indian, Atlantic and Pacific oceans artistically set by Masonry's skilled craftsmen.





Project started: Nov 05
Project completion: Oct 06
Total volume: 85,000m²

Stones used:

- Brillante Bianco Quartz
- Gemme Zirconio Quartz
- Custom Light Blue Quartz
- Dark Grey Granite
- Olive Green Granite
- Absolute Black Granite
- Beige Epoxy Pebblestones
- Grey Epoxy Pebblestones
- Green Epoxy Pebblestones



carved in stone

**"IMAGINATION
IS THE
CORNERSTONE
OF HUMAN
ENDEAVOUR."**

Alex Osborn,
Thinker







cornerstone

Needs may change over time. However, the core values of a quality stonemaker never change. Masonry strives for perfection in its execution of projects as it values customer satisfaction. The company thrives on dedication and passion.

**"THE PERSON
WHO MAKES A
SUCCESS OF
LIVING IS THE ONE
WHO SEES HIS
GOAL STEADILY
AND AIMS FOR IT
UNSWERVINGLY."**

Cecil B. De Mille,
Actor & Director



dedication

Masonry boasts a talented team that is dedicated to delivering and executing each project on time and within budget. Such dedication flows from its drive for continuous improvement and quest for perfection.

**"OPEN YOUR
ARMS TO
CHANGE,
BUT DON'T
LET GO OF
YOUR
VALUES."**

Dalai Lama,
Tibetan Spiritual Leader



passion

Driven by its passion for the business, Masonry has grown from a small local company into an industry leader - casting its network far and wide as it works with both local and foreign companies as well as suppliers. It has stepped up to the challenge.

milestones

**"THE
STARTING
POINT OF ALL
ACHIEVEMENT
IS DESIRE."**

Napoleon Hill,
Author





50 years

Masonry has evolved into a regional company with over 50 years worth of experience among its directors. The company's dedication and passion

towards the stonework industry has enabled it to win significant large-scale projects both in Singapore and overseas.

5 million

Over the past 10 years, Masonry has completed a total of approximately 5 million square feet of stonework. The projects undertaken by the company over the years have rapidly grown in value and scope.

From a company working on small developments in Singapore - Masonry has now widened its reach beyond its home turf as it takes on projects in the region and the Middle East.



In the region, Masonry has left traces of its fine work in countries like Vietnam where it has helped paved the walkways and clad the walls of the Franco-Vietnamese Hospital with superb

stonework. The Singapore company has even left its mark on the world's favourite international shopping district - Dubai - with its involvement in the Dubai Mall project.



At home - Masonry holds its fort and stands above its peers with a dynamic portfolio of some of the island's most prestigious developments in recent

history. VivoCity, Sentosa Cove, One Raffles Quay, One Fullerton & The Esplanade clearly put Masonry in a league of its own.

